

FED. SUP CLASS
5305

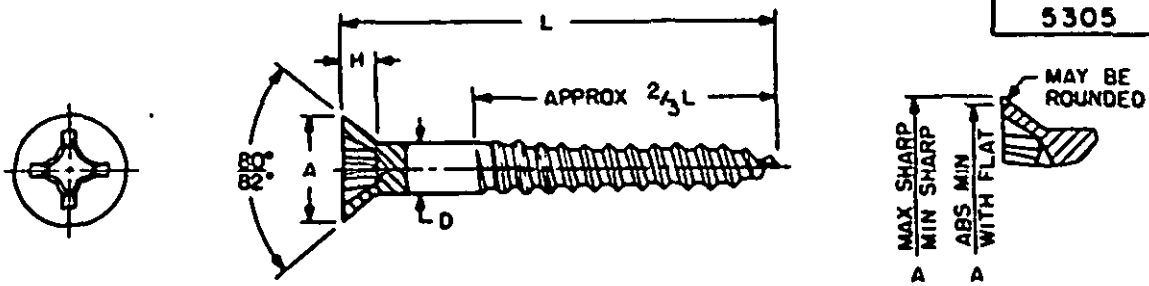


TABLE I

NOMINAL SIZE		2	3*	4	5*	6	7*	8	9*	10	12	14	16
D SCREW DIA	BASIC	.086	.099	.112	.125	.138	.151	.164	.177	.190	.216	.242	.268
	MAX	.090	.103	.116	.129	.142	.155	.168	.181	.194	.220	.246	.272
	MIN	.079	.092	.103	.118	.131	.144	.157	.170	.183	.209	.235	.261
A HEAD DIA	MAX SHARP	.172	.199	.225	.252	.279	.305	.332	.358	.385	.438	.491	.544
	MIN SHARP	.156	.181	.207	.232	.257	.283	.308	.334	.359	.410	.461	.512
	ABS MIN	.147	.171	.195	.220	.244	.268	.292	.316	.340	.389	.437	.485
H HEAD HEIGHT	REF	.051	.059	.067	.075	.083	.091	.100	.108	.116	.132	.148	.164
DRIVER SIZE		1	1	1	2	2	2	2	2	3	3	3	3
THREADS PER INCH		26	24	22	20	18	16	15	14	13	11	10	9

- NOTES:
- 1. **MATERIAL:** Carbon steel, 1010 thru 1022 or 1108 thru 1118 in accordance with QQ-S-631, QQ-S-634, QQ-S-637 or QQ-V-405.
 (E) Brass, alloy no. 260 or 268, quarter-hard in accordance with QQ-B-613 or QQ-B-626; or alloy no. 260 or 270, quarter-hard in accordance with QQ-V-321.
 - 2. **PROTECTIVE COATING:** Steel - Cadmium plated in accordance with QQ-P-416, Type II, Class 3 or MIL-C-81562, Type II, Class 3; or zinc coated in accordance with QQ-Z-325, Type II, Class 3 or MIL-C-81562, Type II, Class 3.
 (E) Brass - Plain, uncoated.
 - 3. **THREADS:** Maximum permissible variation in number of threads per inch shall be plus or minus 10 percent.
 - 4. **RECESS:** The recess shall be in accordance with MS9006.
 - 5. **DIMENSIONS:** All dimensions are in inches.
 - 6. **PART NUMBER:** The MS part number consists of the MS number, plus the dash number.
 Example: MS35492-8.
 - 7. Referenced documents shall be of the issue in effect on date of invitations for bid.
 - 8. For design feature purposes, this standard takes precedence over procurement documents referenced herein.

(E) FOR CHANGES SEE SHEETS 1 AND 2.

P.A. VC Other Cont: YD 82	TITLE SCREW, WOOD, FLAT HEAD, CROSS-RECESSED, STEEL AND BRASS	MILITARY STANDARD MS 35492
PROCUREMENT SPECIFICATION FF-S-111	SUPERSEDES AN590 in part and RQDII.1, 1.2, 3.1, 3.2, 5, 5.1, 5.2, 7, 7.1, and 7.2	SHEET 1 OF 3

APPROVED 4 DEC 1956 REVISED (A) 18 OCT 1966 (B) 1 JUN 1967 (C) 20 MAY 1968 (D) 26 NOV 1968 (E) 15 AUG 1974

This military standard is approved for use by all Departments and Agencies of the Department of Defense. Selection for all new engineering and design applications and for repetitive use shall be made from this document.

REVIEWER: AV, EA, IS, MJ, PA, SH, VT
 USER: AT, MC, ME, NU

TABLE II

STEEL, CADMIUM OR ZINC PLATED

NOMINAL SIZE		2	3	4	5	6	7	8	9	10	12	14	16
L LENGTH	TOL	DASH NO.	DASH NO.*	DASH NO.	DASH NO.*	DASH NO.	DASH NO.*	DASH NO.	DASH NO.*	DASH NO.	DASH NO.	DASH NO.	DASH NO.
.25		901	1	8									
.38	+ .00	902	2	9	18	27		49					
.50	- .03	903	3	10	19	28	39	50		74			
.62		904	4	11	20	29	40	51		75	89		
.75		905	5	12	21	30	41	52	64	76	90	103	
.88	+ .00		6	13	22	31	42	53	65	77	91	104	
1.00	- .05		7	14	23	32	43	54	66	78	92	105	117
1.25				15		33	44	55	67	79	93	106	118
1.50				16		34	45	56	68	80	94	107	119
1.75						35		57	69	81	95	108	120
2.00	+ .00					36		58	70	82	96	109	121
2.25	- .06					37		59	71	83	97	110	122
2.50						38		60	72	84	98	111	123
2.75								61		85	99	112	124
3.00								910		86	100	113	125
3.50	+ .00									87	101	114	126
4.00	- .09										102	115	127
4.50												116	128
5.00												911	129

TABLE III

BRASS, PLAIN, UNCOATED

NOMINAL SIZE		2	3	4	5	6	7	8	9	10	12	14
L LENGTH	TOL	DASH NO.	DASH NO.*	DASH NO.	DASH NO.*	DASH NO.	DASH NO.*	DASH NO.	DASH NO.*	DASH NO.	DASH NO.	DASH NO.
.25		920	201	208								
.38	+ .00	921	202	209	218	227						
.50	- .03	922	203	210	219	228	239	249				
.62		923	204	211	220	229	240	250		271		
.75		924	205	212	221	230	241	251	261	272	283	
.88	+ .00			213	222	231	242	252	262	273	284	
1.00	- .05			214	223	232	243	253	263	274	285	295
1.25						233	244	254	264	275	286	296
1.50						234	245	255	265	276	287	297
1.75								256	266	277	288	298
2.00	+ .00							257	267	278	289	299
2.25	- .06									279	290	301
2.50										280	291	303
3.00	+ .00										293	
3.50	- .09										294	

* NOTE: Crossed-out dash numbers (sizes 3, 5, 7 and 9) are INACTIVE FOR NEW DESIGN AFTER 15 August 1974.

(E)

INTERCHANGEABILITY

Steel, cadmium plated screws covered by dash numbers 501 thru 625 given in revision A of this standard are canceled after 1 June 1967. Brass, black oxide coated screws covered by dash numbers 701 thru 803 given in revision B of this standard and screws covered on AN550 in part are canceled after 20 May 1968. The canceled screws should be used for maintenance purposes until existing stocks are depleted. Use only the superseding screws for new design and engineering. Replacement shall be in accordance with Table IV (see sheet 3).

P.A. WC
Other Cont YD
82

TITLE

SCREW, WOOD, FLAT HEAD, CROSS-RECESSED,
STEEL AND BRASS

MILITARY STANDARD

MS 35492

PROCUREMENT SPECIFICATION
PF-S-111

SUPERSEDES: AN550 in part and BQDLJ, 1.2, 3.1, 1.2, 5,
5.1, 5.2, 7, 7.1 and 7.2

SHEET 2 OF 3

This military standard is approved for use by all Departments and Agencies of the Department of Defense. Selection for all new engineering and design applications and for repetitive use shall be made from this document.

REVISER: AV, EA, IS, MI, MU, PA, SH, VT
USER: AI, MC, ME, MU, PA, SH, VT

APPROVED 4 DEC 1956 REVISED (D) 26 NOV 1968 (E) FOR CHANGES SEE SHEETS 1 AND 2.

TABLE IV - INTERCHANGEABILITY

PART NUMBER		PART NUMBER		PART NUMBER		PART NUMBER		PART NUMBER	
CANCELED	SUPSD BY	CANCELED	SUPSD BY	CANCELED	SUPSD BY	CANCELED	SUPSD BY	CANCELED	SUPSD BY
MSJ5492	MSJ5492	MS15492	MS15492	MS15492	MS15492	AN550	MS15492	AN550	MS15492
501	1	596	96	767	267	6R14	37	16R22	124
502	2	597	97	772	272	6R20	18	16R24	125
503	J	598	98	773	273	8R 3	49	16R28	126
504	4	600	100	774	274	8R 4	50	16R32	127
508	8	603	103	775	275	8R5	51	16R36	128
509	9	606	106	776	276	8R6	52	16R40	129
510	10	607	107	777	277	8R7	53	82R2	920
511	11	608	108	778	278	8R8	54	82R3	921
512	12	609	109	780	280	8R10	55	82R4	922
513	13	610	110	785	285	8R12	56	82R5	923
514	14	611	111	786	286	8R14	57	82R6	924
518	18	613	113	787	287	8R16	58	83R3	202
519	19	617	117	788	288	8R18	59	83R4	203
520	20	618	118	789	289	8R20	60	83R5	204
521	21	619	119	791	291	8R24	61	83R6	205
522	22	620	120	793	293	8R28	910	84R2	208
523	23	621	121	795	295	10R4	74	84R3	209
527	27	622	122	796	296	10R5	75	84R4	210
528	28	623	123	797	297	10R6	76	84R5	211
529	29	625	125	798	298	10R7	77	84R6	212
530	30	701	201	799	299	10R8	78	84R7	213
531	31	702	202	801	301	10R10	79	84R8	214
532	32	703	203	803	303	10R12	80	85R3	218
533	33	708	208			10R14	81	85R4	219
534	34	709	209			10R16	82	85R5	220
539	39	710	210			10R18	83	85R6	221
540	40	711	211			10R20	84	85R7	222
541	41	712	212			10R22	85	85R8	223
542	42	713	213			10R24	86	86R3	227
543	43	714	214			10R28	87	86R4	228
544	44	718	218					86R5	229
545	45	719	219	2R2	901	12R5	89	86R6	230
550	50	720	220	2R3	902	12R6	90	86R7	231
551	51	721	221	2R4	903	12R7	91	86R8	232
552	52	722	222	2R5	904	12R8	92	86R9	233
553	53	723	223	2R6	905	12R10	93	86R10	234
554	54	727	227	3R3	2	12R12	94	86R12	234
555	55	728	228	3R4	3	12R14	95	86R4	249
556	56	729	229	3R5	4	12R16	96	86R5	250
557	57	730	230	3R6	5	12R18	97	86R6	251
558	58	731	231	3R7	6	12R20	98	86R7	252
560	60	732	232	3R8	7	12R22	99	86R8	253
564	64	733	233	4R2	8	12R24	100	86R10	254
565	65	734	234	4R3	9	12R28	101	86R12	255
566	66	739	239	4R4	10	12R32	102	86R14	256
567	67	740	240	4R5	11	14R6	103	86R16	257
568	68	741	241	4R6	12	14R7	104	810R5	271
569	69	742	242	4R7	13	14R8	105	810R6	272
570	70	743	243	4R8	14	14R10	106	810R7	273
572	72	744	244	4R10	15	14R12	107	810R9	274
576	76	745	245	4R12	16	14R14	108	810R10	275
577	77	749	249	5R3	18	14R16	109	810R12	276
578	78	750	250	5R4	19	14R18	110	810R14	277
579	79	751	251	5R5	20	14R20	111	810R16	278
580	80	752	252	5R6	21	14R22	112	810R18	279
581	81	753	253	5R7	22	14R24	113	810R20	280
582	82	754	254	5R8	23	14R28	114	812R6	283
583	83	755	255	6R3	27	14R32	115	812R7	284
584	84	756	256	6R4	28	14R36	116	812R8	285
586	86	757	257	6R5	29	14R40	911	812R10	286
590	90	761	261	6R6	30	16R8	117	812R12	287
591	91	762	262	6R7	31	16R10	118	812R14	288
592	92	763	263	6R8	32	16R12	119	812R16	289
593	93	764	264	6R10	33	16R14	120	812R18	290
594	94	765	265	6R12	34	16R16	121	812R20	291
595	95	766	266	6R14	35	16R18	122	812R24	293
				6R16	36	16R20	123	812R28	294

REVIEWER: AV, EA, IS, MI
USER: AT, MC, ME, MU, PA, SH, VT

This copy standard is approved for use by all Departments and Agencies of the Department of Defense. Selection for all new engineering and design applications and for repetitive use shall be made from this document.

APPROVED 4 DEC 1956 REVISED 26 NOV 1960 FOR CHANGES SEE SHEETS 1 AND 2.

P.A. VC	TITLE	MILITARY STANDARD
Other Cont YD 82	SCREW, WOOD, FLAT HEAD, CROSS-RECESSED, STEEL AND BRASS	MS 35492
PROCUREMENT SPECIFICATION FF-S-111	SUPERSEDES AN550 in part and BQQ1-1, 1.2, 3.1, 3.2, 5, 5.1, 5.2, 7, 9.1 and 7.2	SHEET 3 OF 3